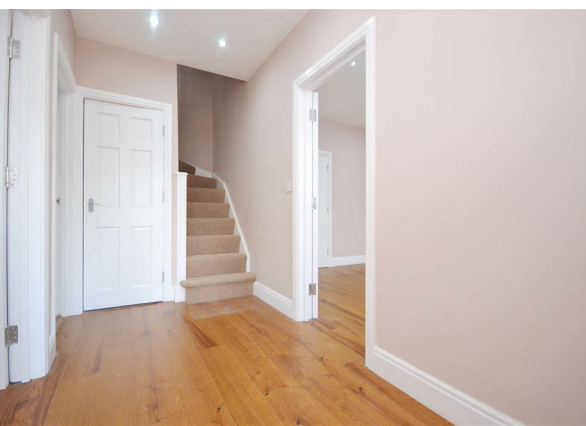
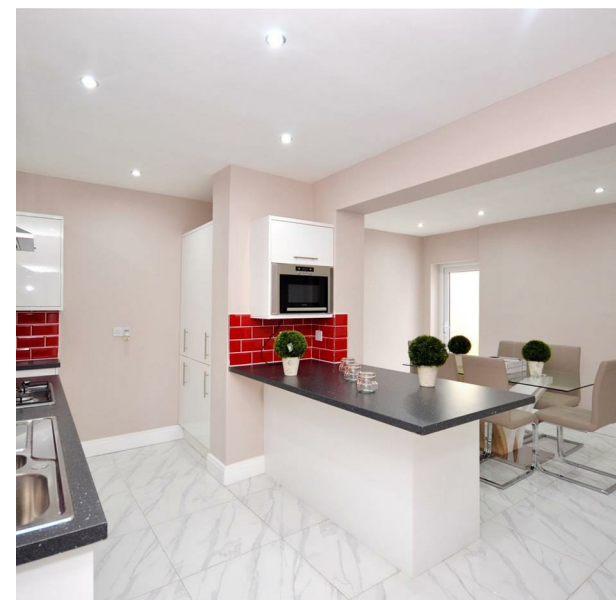
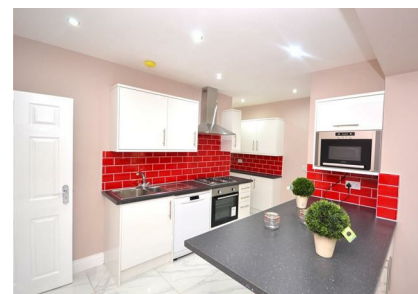


15 Fairview Close, Walthamstow, London, Greater London, E17 5HJ  
Price Guide £825,000

**COMPLETION**  
SALES & LETTINGS



# 15 Fairview Close, Walthamstow, London, Greater London, E17 5HJ

Price Guide £825,000

Council Tax Band: D

Nestled in the desirable Fairview Close, Walthamstow, this exceptionally large semi-detached house is now available for sale chain free. This remarkable property boasts an impressive seven bedrooms, making it ideal for large families or as a lucrative investment opportunity.

Upon entering, you will find three spacious reception rooms that provide ample space for relaxation and entertainment. The heart of the home is a generous kitchen diner, perfect for family gatherings and culinary adventures. With five bathrooms, morning routines will be a breeze, ensuring convenience for all residents.

The property is set within a tranquil close, offering a peaceful environment while still being close to local amenities. The large garden, complete with side access, presents an excellent outdoor space for children to play or for hosting summer barbecues.





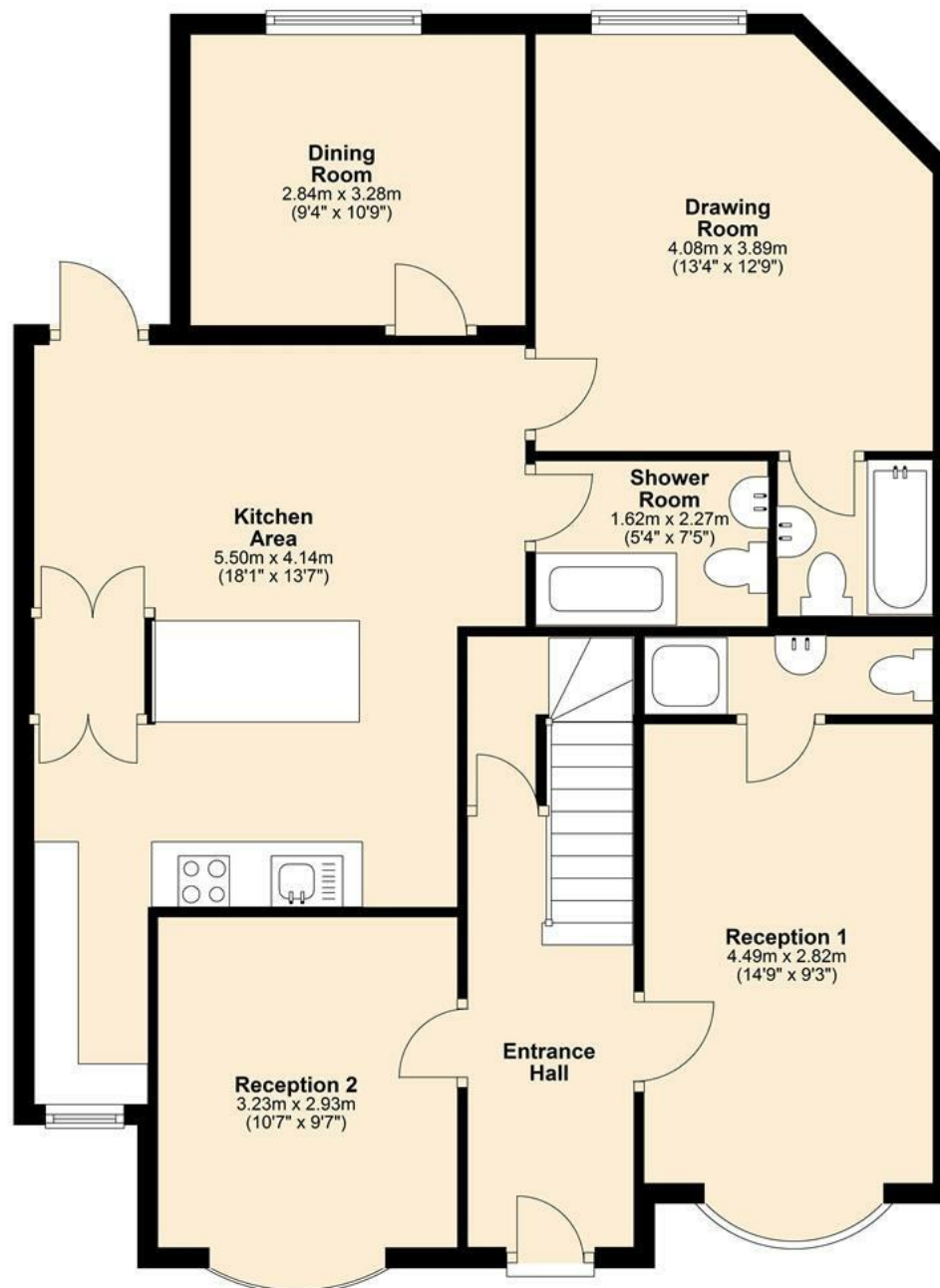








**Ground Floor**  
Approx. 92.1 sq. metres (991.3 sq. feet)



337 Forest Road  
London  
E17 5JR  
02085277007  
enquiries@completion.co.uk  
completion.co.uk

Energy Efficiency Rating		
	Current	Potential
Very energy efficient - lower running costs		
(92 plus) <b>A</b>		
(81-91) <b>B</b>		83
(69-80) <b>C</b>		
(55-68) <b>D</b>	56	
(39-54) <b>E</b>		
(21-38) <b>F</b>		
(1-20) <b>G</b>		
Not energy efficient - higher running costs		
England & Wales		EU Directive 2002/91/EC